



**CLASS OF 2025,
TITANS OF 2035**

12TH LEE KUAN YEW

GLOBAL BUSINESS PLAN COMPETITION

EVENT PROGRAMME



29 SEP - 2 OCT 2025
Singapore

CONTENTS

Foreword by Prof Lily Kong, Prof Sun, Ms Shirley Wong	3
Grand Finals Week Agenda	4
Urban Sustainnovator	6
VC Office Hours	8
Talent Exchange	12
Canvas of the Future	13
DueAI Discovery	15
DueAI Conversations	16
Grand Finals Judges	18
CSO Conversations	20
Meet the Corporates	24
Opening Reception Dinner	29
Faculty Engagement	31
Classroom Takeovers	33
Meeting Mr Heng Swee Keat	34
Blaze Mixer Night	36
Startup Resources	38
Supporters & Partners	39
How SMU Supports LKYGBPC	42

© 2025 Lee Kuan Yew Global Business Plan Competition. All rights reserved.
All content, materials, and submissions related to the 12th Lee Kuan Yew Global Business Plan Competition are the property of the Institute of Innovation & Entrepreneurship, Singapore Management University. Any reproduction, distribution, or use of any part of the competition content without prior written consent is strictly prohibited.

“Helming the design of the 12th LKYGBPC was a true privilege. I walked away with deep admiration for the grit and brilliance of the startup founders — and for the IIE team’s unwavering commitment to innovation. I hope, in my own small way, to have captured the soul and energy of this edition — so this moment lives on.”

Nancy Kin-Wee | Design Lead, 12th LKYGBPC



FOREWORD



As a knowledge gateway between Asia and the world, SMU will forge partnerships that expand learning opportunities, facilitate collaborations to address societal challenges, create knowledge transfer to benefit society, and drive innovations and create real-world impact.

PROFESSOR LILY KONG, BBM, PBM, FBA

President and Lee Kong Chian Chair
Professor of Social Sciences
Singapore Management University

Even as the world is grappling with a slew of challenges be it geopolitical shifts, ideological divides or environmental degradation, universities like SMU can lead the charge in developing sensible and workable solutions. By forging connections between creative people with disruptive ideas via events like the LKYGBPC, SMU is paving the way towards innovating for positive outcomes.

PROFESSOR LIM SUN SUN

Vice President (Partnerships and Engagement);
Lee Kong Chian Professor of Communication & Technology,
Singapore Management University



Having witnessed the evolution of LKYGBPC across four editions now, I can confidently say that this 12th edition represents our most ambitious chapter yet with record breaking numbers achieved. Each edition, I've seen brilliant minds being moulded into seasoned entrepreneurs who go on to build companies that matter and impact communities positively. LKYGBPC has become more than a competition. It has transformed into a robust ecosystem where lifelong relationships, strategic mentorships, and game-changing partnerships flourish. I'm excited to see how the 12th edition will nurture and launch the changemakers who will shape industries and transform communities across Asia and beyond.

MS. SHIRLEY WONG

Chair, Lee Kuan Yew Global Business Plan Competition
Entrepreneur-in-Residence, SMU Institute of Innovation & Entrepreneurship
Managing Partner, TNF Ventures Pte Ltd



GRAND FINALS WEEK AGENDA

29 SEP (MON) *Open to Public (by Registration)*

TIME	PROGRAMME	VENUE
11:30 AM	• Talent Exchange	SMU Hall 3, YPHSL
12:15 PM	• DueAI® Discovery	YPHSL Function Lounge 4-2
1:30 PM	• VC Office Hours	SMU Hall 3
3:25 PM	• Address by Prof Lim Sun Sun, Vice President of Partnerships & Engagement, Singapore Management University	SMU Hall
3:35 PM	• Opening Ceremony - Guest-of-Honour: Mr. Chee Hong Tat, Minister for National Development	SMU Hall
3:55 PM	• New Accelerator Launch	SMU Hall
	• Fireside Chat with Accelerator Partners	SMU Hall
4:35 PM	• DueAI Conversations	SMU Hall, Basement 1, YPHSL
5:30 PM	• End of Event	
7:00 PM	• Networking Dinner (By Invitation)	The Clifford Pier, The Fullerton Bay Hotel

30 SEP (TUE) *By Invitation*

TIME	PROGRAMME	VENUE
8:00 AM	• 6th AUN-UIE Annual General Meeting ¹	YPHSL Function Lounge 4-2
9:00 AM	• Category Finals Pitching	SMU Admin Building
7:00 PM	• Networking Dinner	SMU Hall

¹ASEAN University Network - University Innovation and Enterprise

1 OCT (WED) *By Invitation*

TIME	PROGRAMME	VENUE
9:00 AM	• Meet the Corporates - Site Visits	SMU Hall & Various Locations
3:00 PM	• Business Families @ LKYGBPC	YPHSL Function Lounge 4-2

2 OCT (THU) *Open to Public (by Registration)*

TIME	PROGRAMME	VENUE
10:00 AM	• Grand Finals Pitching	SMU Hall
11:55 PM	• Address by Professor Lily Kong, President of Singapore Management University	SMU Hall
12:05 PM	• Keynote Address by Guest-of-Honour: Mr. Heng Swee Keat, Chairman of National Research Foundation	
1:45 PM	• Grand Finals Pitching	SMU Hall
3:45 PM	• Changemakers Conversations with Chief Sustainability Officers (CSOs)	SMU Hall, Basement 1, YPHSL
5.00 PM	• Award Ceremony	SMU Hall
6.30 PM	• BLAZE Mixer Night	GlassDome – Landmark of Good

Please note that the above programme is subject to changes.



Launch, build, and scale your startup — with *Antler in Singapore*

Get funded by a global VC that empowers the most exceptional founders with capital, mentorship, and the network to turn world-changing ideas into reality.



Antler is proud to present the NextGen Investment Prize.

Antler is where founders come to go further, faster. Antler is the world's most active early-stage investor, backing exceptional people at the very start of their journey and supporting them from inception to scale. Across 30 cities worldwide, including New York, San Francisco, London, Berlin, Bangalore, Singapore, Seoul, and Sydney, the firm helps founders remove the barriers to building by connecting them with world-class peers, validating business models, and providing initial capital. To date, Antler has backed more than 1,500 startups globally, including Airalo, Lovable, Peec.AI, Reebelo, Wrtn, and Benjamin. For founders who go on to build breakout companies, Antler Elevate, the \$285M emerging growth fund, invests beyond the early stages, managed through offices in London, Singapore, and New York.



For more information: www.antler.co



URBAN SUSTAINNOVATOR

Scaling Urban Sustainability Startups



OFFICIAL LAUNCH

Urban SustainInnovator (USI) is Singapore's first global accelerator dedicated to scaling breakthrough solutions for Urban Solutions and Sustainability challenges.

Launched by Singapore Management University's Institute of Innovation & Entrepreneurship, it is a zero-equity, zero-fee program that unites leading public, private, and philanthropic partners to turn bold ideas into real-world impact.

We exist to bridge global high potential Urban Sustainability startups into Asia through Singapore's innovation ecosystem. By providing access to deep expertise, capital, industry partners, and mentorship, we help founders scale their visionary companies.



Join Us

Urban SustainInnovator is more than an accelerator — it is a movement of innovators, partners, and changemakers committed to shaping sustainable cities and a better future for all.

JOIN NOW

LKYGBPC ACCELERATOR LAUNCH

OFFICIAL LAUNCH

The new LKYGBPC accelerator plugs startups directly into the power centres of Singapore's innovation ecosystem for capital, regulation, and industry expertise. Through the accelerator, startups are empowered to move faster and scale smarter than the competition.



Join Us

The new LKYGBPC accelerator is more than an accelerator — it is a movement of innovators, partners, and changemakers committed to shaping sustainable cities and a better future for all.

[JOIN NOW](#)

The IMDA Accreditation and Spark programmes aim to accelerate the growth of disruptive, fast-growing Singapore-based enterprise tech product companies by establishing their credentials and positioning them as qualified contenders to government and large enterprise buyers.



The programmes support companies in their growth journey by connecting them to government and enterprise demand, and facilitate scaling through procurement support, proof-of-concept acceleration, funding access, and international expansion via strategic partners' global footprint.

To date, the programmes have supported the growth of over 220 frontier tech companies, helping them generate more than S\$1 billion in annual revenue and catalysed over S\$1.4 billion in new growth capital, resulting in 27 successful exits through mergers and acquisitions and initial public offerings.

For clarifications or to find out more details on the programme, please contact accreditation@imda.gov.sg.





OFFICE HOURS

LKYGBPC's VC Office Hours, presented by IMDA and powered by Protégé Ventures, is primed to be Southeast Asia's biggest congregation of senior VCs providing pro-bono advisory to rapidly rising deep tech start-ups from the region and beyond.

DATE & VENUE

29 September 2025 | Time: 11.30am - 1.00pm

SMU Hall 3, Yong Pung How School of Law

Powered by



Presented by



PARTICIPATING VCs



ANDREW WONG
Director, TRIREC



ALAN ANG
Director
Woori Venture Partners



ALEX SAN
Investments
The Radical Fund



BELLE LIM
Director, Portfolio & Investor
Relations, Motion Ventures



CONSTATIN ROBERTZ
Co-Founder, Kaya Founders



DANIEL TAN
Director, Aera VC



DARIO GIORDANO
Indorama Ventures
Investment & Holdings
Chief Technology Officer



DAVID PARDO
Founding Partner
Sif.vc



FIONA LIM
Atlas Ventures



FARHAN FIRDAUS
Partner, Meet Ventures



GERARD CHIA
Partner, Clay Capital



HENRY TAO
Director
Untrod Capital Asia



GIGI CHO
Investment Principal
Hivemind Capital



JEREMY LOH
Managing Partner
Genesis Alternative Ventures



JEFFREY PAINE
Partner
Golden Gate Ventures



OFFICE HOURS

LKYGBPC's VC Office Hours, presented by IMDA and powered by Protégé Ventures, is primed to be Southeast Asia's biggest congregation of senior VCs providing pro-bono advisory to rapidly rising deep tech start-ups from the region and beyond.

DATE & VENUE

29 September 2025 | Time: 11.30am - 1.00pm

SMU Hall 3, Yong Pung How School of Law

Powered by



Presented by



PARTICIPATING VCs



JASON SU

Director
Farquhar Venture Capital



JOSHUA LIM

Investor, January Capital



JEREMY SOH

Vice President
BEENEXT



JOSHIA KWA

Principal, Integra Partners



JEFFREY JOE

Co-Founder &
General Partner,
Alpha JWC Ventures



JEFF LIN

Partner, iGlobe Partners



KELLIE CHAN

Assistant Director,
Investments, SGInnovate



KIM PNG

Principal
Polaris Partners



KORNEL TETERA

Investment Director
Kibo Invest



KU KAY MOK

Senior Partner
Gobi Partners



LAU SHI YING

Managing Partner,
Adaptive Capital Partners



LIM YI CHAO

Senior Associate
ReefKnot Investments



LEO WEN GE

Vice President
Wavemaker Partners



MARKUS BRUDERER

Partner, Antler



NICOLAS LYE

Principal, Hive Ventures



PORSHIN NG

Founder & Managing Director
AXONVIS



REMI CHOONG

Partner, Elev8.vc



SCOTT KRIVOKOPICH

Director, 1982 Ventures



SIDDHARTH PISHARODY

Partner, Argor Capital



RYAN TAN

Head, Catalytic Capital
for Climate & Health



OFFICE HOURS

LKYGBPC's VC Office Hours, presented by IMDA and powered by Protégé Ventures, is primed to be Southeast Asia's biggest congregation of senior VCs providing pro-bono advisory to rapidly rising deep tech start-ups from the region and beyond.

DATE & VENUE

29 September 2025 | Time: 11.30am - 1.00pm

SMU Hall 3, Yong Pung How School of Law

Powered by



Presented by



PARTICIPATING VCs



SIMON LEVY
Associate, U2V



TAN CHOON KIAN
Managing Partner
Greenwillow Capital
Management



THEODORA LAI
Partner, Moringa Ventures



VON LEONG
Co-Founder, Purpose
Venture Capital



**VORAPOL (BROOK)
SUPANUSONTI**
Asia Partners



WAYNE LEE
Venture Architect
ATUM Ventures



WEE CHIN CHUAN
Director (Sustainable
Finance), Global
Sustainability
Nexus Pte Ltd



WEI LUO
Assistant Managing Director
Vickers Venture Partners



XINHUI TAN
General Partner
Paragon Capital
Management



YINGMIN WANG
Director, Digital Health
and Medtech Investments
Clavystbio



YONG CHERN CHET
Head of Asia Ecosystem
22Health Ventures



YUFENG WAN
Partner & Head of
Energy Transition
Investment, Templewater Ltd

INDORAMA VENTURES

Indorama Ventures PCL is one of the world's leading sustainable petrochemicals producers, with a manufacturing footprint across Europe, Africa, Americas, and Asia Pacific. The company's segments—Combined PET, Fibers, Indovina, and Indovina—produce indispensable chemistry with safe and responsible materials, serving essential markets, including food & beverages, textiles, pharmaceuticals, home & personal care, automotive, and agrochemicals. Indorama Ventures is listed in the Dow Jones Best-In-Class Indices, recognizing our ambition to lead change and shape a future where materials are more innovative and circular.



Indorama Ventures Future of Sustainable Materials Award

The Indorama Ventures Future of Sustainable Materials Award is a \$125,000 prize offered by Indorama Ventures, one of the world's leading sustainable petrochemicals producers, through the Lee Kuan Yew Global Business Plan Competition (LKYGBPC) for Asia-focused startups with breakthrough technologies in sustainable fibers, bio-based feedstocks, and advanced recycling/circular solutions.



Sustainability drives Indorama Ventures' growth and innovation. By collaborating with pioneering startups, we transform bold ideas into scalable advanced recycling and bio-based solutions, accelerating the transition to a circular economy and creating long-term value for society and planet.

Yash Lohia

Executive President of Petchem and
Chairman of the ESG Council, Indorama Ventures

**SUPPORTERS
& PARTNERS**



Talent Exchange (TX)

DATE & VENUE

17 29 September 2025 | Time: 11.30am - 1.00pm

📍 SMU Hall 3, Yong Pung How School of Law

What is TX?

The LKYGBPC Talent Exchange is more than a conventional career fair; it is a launchpad where deep tech rising stars from around the meet aspiring student talent from our universities and tertiary institutions. This meet-and-greet is a powerful two-way street that connects founders to the possibilities of augmenting their teams, while opening pathways for students to internships and career opportunities. This is where impactful innovation is truly fuelled.

ASPIRING TALENTS

200+ students from Singapore's leading IHLs spanning diverse disciplines: AI & software engineering, climate & sustainability, biomedical innovation, design & communications, and more.

DEEP TECH STARTUPS

Grand Finalists representing cutting-edge solutions from focus areas such as climate tech, carbon tech, emerging tech and more.

In Attendance:

FEATURED TALENTS ON 2ND OCT



SAMANTHA LIM
National University of Singapore



PAUL FLORENTINO
Singapore Institute of Technology



ANSON KOH
Singapore Management University



GENESIS NG
Singapore University of Social Sciences



PULUGURTHA AVINASH
INSEAD



WAYNE TAN
Nanyang Technological University

PARTICIPATING INSTITUTES OF HIGHER LEARNING



CANVAS OF THE FUTURE

WHERE ART MEETS TECH

What is CANVAS OF THE FUTURE?

17 SEP - 2 OCT
SMU CONCOURSE B1

Canvas of the Future is a cross-disciplinary art exhibition where art meets deep tech. It reimagines the complex, inspiring solutions of the LKYGBPC Grand Finalists as approachable and thought-provoking illustrations. The startup art exhibition invites the SMU community and beyond to explore bold ideas shaping a more sustainable future — sparking conversations and collaborations.



LKYGBPC Student Ambassadors leading 'Canvas of the Future' Tour, 26 Sep 2025



Vote for the Startup that
inspires you!



Customize by Angelina Jennings,
Singapore Management University



ReZinc by Joshita Sturgess,
Nanyang Technological University

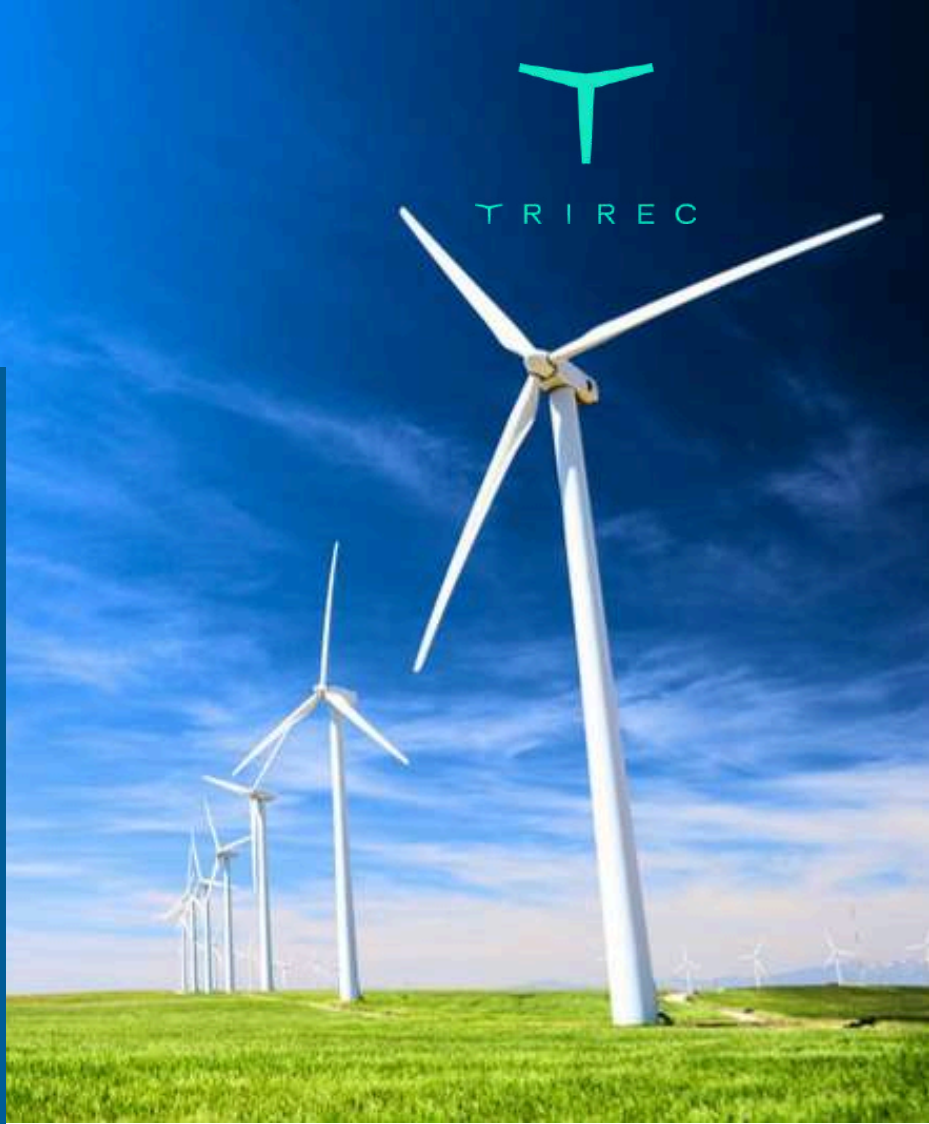
Decarbonising the Future, One Breakthrough at a Time.

TRIREC is a Singapore-based venture capital firm established in 2015 with a clear mandate to accelerate global decarbonization through strategic early-stage investments.

We focus on four key verticals, Mobility, Buildings, Industries, Energy supporting technologies that actively reduce or remove greenhouse gas emissions. With a global portfolio of over 20 companies, we invest primarily in Pre-Series A and Series A ventures with the potential to drive meaningful, scalable impact.

Over the past 10 years, we have grown from a small team with a bold vision into a global partner for mission-driven founders, learning and evolving with every investment. This milestone is not just a celebration of longevity, but a reflection of the partnerships, innovation, and perseverance that have defined our journey. We take pride in the tangible climate impact our portfolio companies are achieving and the lasting value we have created for our stakeholders while advancing decarbonization.

At TRIREC, we are entrepreneurial at heart, collaborative by nature, guided by integrity, and driven to succeed.



Climate Innovation Investment Prize presented by TRIREC

At TRIREC, we've always believed that innovation is at the heart of solving the climate crisis. As Singapore's pioneering venture capital firm dedicated to decarbonization, our mission has been to back visionary founders who are reshaping industries and accelerating the world's transition to a net-zero future.

That's why we're proud to present the Climate Innovation Investment Prize, created to support bold entrepreneurs building scalable solutions that can truly move the needle on climate.

TRIREC's journey started back in 2011 with Sunseap, which has grown to become one of Singapore's largest clean energy providers. Seeing Sunseap's success gave us a front-row view of the world's shift toward a low-carbon economy and reinforced our belief in the real potential of sustainable solutions.

That experience inspired us to launch TRIREC in 2015, to seize opportunities emerging from the global push for decarbonization. Today, our focus is simple: to back bold, impactful ideas that drive the transition toward a sustainable and decarbonized future. For us, this isn't just about capital - it's about supporting and backing ideas with the potential to transform how we live, work, and thrive in a decarbonized world.



DUEAI[®] DISCOVERY

DATE & VENUE

 29 September 2025 | Time: 12:15 - 1:45pm

 Yong Pung How School of Law, Function Lounge 4-2

AI is picking unicorns now. You keeping up?



The DueAI[®] Challenge ("DueAI") is a global initiative that empowers AI startups and enterprises to transform the investment landscape. DueAI Challenge serves as a platform to empower human-AI collaboration by allowing AI-driven startups to evaluate pitch decks of participants for 12th LKYGBPC. Join us in this DueAI Discovery, to understand what goes behind the scene, outcome and takeaways for DueAI[®] Challenge and to hear from DueAI finalists how they are leveraging cutting-edge algorithms to automate and enhance startup assessments, making investment decisions smarter and more inclusive.

SPEAKERS



DR SZE TIAM LIN

Senior Licensing Advisor,
Institute of Innovation & Entrepreneurship,
Singapore Management University



MR AMIR LAVASANI

Co-Founder & CTO
Evalyze



DR CHENG LING

Co-Founder & CEO
Puffer AI



MR PARAS KALURA

Co-Founder
Shensu AI



DUEAI[®] CONVERSATIONS

DATE & VENUE

29 September 2025 | Time: 4.35pm - 5.25pm

SMU Hall, Basement 1, Yong Pung How School of Law

How will AI Disrupt Venture Capital?

AI is rapidly reshaping the venture capital landscape—from how deals are sourced and evaluated to how investment decisions are made. This panel explores the transformative power of AI in streamlining startup due diligence, automating technical, business, financial and legal assessments, and predicting founder or team success with new insights. As platforms like SMU's DueAI Challenge demonstrate, AI is not just augmenting investor workflows—it's redefining them.

Join leading voices in venture capital, AI innovation, and startup strategy as they unpack the opportunities and ethical dilemmas of this shift. What does it mean for the future of human judgment in investing? How can VCs harness AI responsibly to scale smarter, faster, and fairer?



Panellists



MR SNG REN YEONG
Managing Director, AI
Temasek



MR RICHARD KOH
CTO, Enterprise Partner
Solutions for
Microsoft Asia



MR DAN CHONG
Managing Director
Gobi Partners



PROF LIM SUN SUN
Vice President
(Partnerships and Engagement);
Lee Kong Chian Professor of
Communication & Technology,
Singapore Management
University



PROF KENNETH GOH
Associate Professor of
Strategy & Entrepreneurship
(Education); Academic Director,
Business Families Institute,
Singapore Management
University

(Moderator)

WAVEMAKER PARTNERS

*Leading the charge in
Enterprise, Deep Tech,
and Sustainability across
Southeast Asia.*



Wavemaker Partners is Southeast Asia's leading venture capital firm, backing over 200 companies since 2012 with US\$500M in total committed capital across enterprise, deep tech, and sustainability.

Its funds span venture building, early-stage, and growth, with exits generating over US\$2B in enterprise value.

Today, 95% of its active portfolio contributes to at least one UN Sustainable Development Goal, reflecting its commitment to meaningful, scalable, and sustainable innovation.

Wavemaker Partners is proud to present the Wavemaker Sustainability Investment Prize at the 12th LKYGBPC — supporting companies driving sustainable solutions and creating meaningful impact.



GRAND FINALS JUDGES

The Grand Finals of the 12th Lee Kuan Yew Global Business Plan Competition represent the culmination of an intense multi-stage journey. The top startups, having first emerged victorious in their respective Category Finals, will present their most groundbreaking innovations to a distinguished panel of judges, investors, and industry leaders. Their pitches showcase bold solutions to global challenges and set the stage for one of the most prestigious moments in the competition: the awarding of the Chancellor's Cup for Beta Innovation Prize and the Chancellor's Cup for Infinity Impact Prize. More than a contest, the Grand Finals are a celebration of entrepreneurial excellence, transformative ideas, and the vision of ventures poised to make a lasting global impact.



SHIRLEY WONG
Entrepreneur-in-Residence, Singapore Management University



CATIA CESARI
Managing Partner, Volta Circle



DR JOSEPHINE KWA
Independent Non-Executive Director, Sembcorp Industries Limited



HARVEY TOOR
Chief Investment Officer, Singapore Management University



PROF NG HUCK HUI
Assistant Chief Executive, Research & Talent Development, Agency for Science Technology and Research (A*STAR)



MELVYN YEO
Founder and Managing Partner, Trirec



PAUL SANTOS
Founding Partner, Wavemaker Partners



RUFUS SORSA
Associate Partner, Antler



SOH LENG WAN
Assistant Chief Executive Officer, Enterprise Singapore



PROF YEOH LEAN WENG
Chief Sustainability Officer, Agency for Science Technology and Research (A*STAR)



YANGTZE DELTA REGION INSTITUTE OF TSINGHUA UNIVERSITY, ZHEJIANG (YIT)

*Global Vision,
Boundless Explorations*



浙江清华长三角研究院

YANGTZE DELTA REGION INSTITUTE OF TSINGHUA UNIVERSITY, ZHEJIANG

The Yangtze Delta Region Institute of Tsinghua University, Zhejiang (YIT) was jointly established by Tsinghua University and the Zhejiang Provincial Government in 2003. Today, YIT is a world-class innovation hub that leverages global technology and attracts top innovators to drive technological breakthroughs, talent development, and high-tech industrialization. Each year, YIT hosts more than 40 project matchmaking events and startup competitions, connecting 2,000+ startup projects with leading universities, research institutes, professional associations, and financial institutions worldwide. Read more about YIT [here](#).

YIT Global Exploration Prize

The YIT Global Exploration Prize is awarded to three globally oriented ventures and includes incubation support, access to cutting-edge research facilities, and 50 hours of tailored consulting (policy, market, tech) with direct access to investors and industry partners—benefits valued at more than \$75,000. Winners also receive fast-track entry to innovation competitions and the option to establish an R&D center within YIT.

CSO Conversations: Where Climate Leadership Meets Action

How do we move from bold pledges to real progress? The inaugural CSO Conversations, organised by SMU Institute of Innovation & Entrepreneurship in collaboration with the Singapore Green Finance Centre and SMU Urban Institute, brings together top Chief Sustainability Officers, regulators, and future-forward innovators to answer exactly that.

The programme unfolds in two distinct segments:

CSO Roundtable (By Invitation Only)

A candid, Chatham House Rule dialogue among senior CSOs, regulators, and selected LKYGBPC finalists. Discussions explore:

- Innovating from within: how businesses are rewiring operations to build climate resilience
- Smart governance: using tech and data to deliver credible, trackable impact
- Financing our future: unlocking capital and carbon pathways to accelerate adoption



BY-INVITATION ONLY

Inaugural CSO Conversations

CSO Roundtable



Thursday, 2 October 2025

13:30 - 15:00

Registration and Networking Lunch starts at 12.30pm



Yong Pung How School of Law
Function Lounge, Level 4



Changemaker Conversations with CSOs

Building on the Roundtable, this public forum convenes corporate leaders and deep-tech innovators to explore Asia's distinct approach to sustainability and the central role of technology in delivering measurable outcomes. From ambition to action, the conversation highlights how innovation, policy, and financing are converging to build liveable, climate-ready urban future.



Keynote Speaker

DR SCOTT FRITZEN

Vice President (Impact),
Singapore Management University

Moderator

DR THEODOR COJIANU

Associate Professor of Sustainable Finance,
Singapore Management University

Panellists

HELGE MUENKEL

Group Chief Sustainability Officer
DBS Bank

SPENCER LOW

Regional Head of Sustainability
Google

TARA GUPTA

Founder and CEO
Map-Collective

Changemaker Conversations with CSOs



Thursday, 2 October 2025

3:45PM to 4:55PM



Yong Pung How School of Law,
SMU Hall, Basement 1



ZHANG FAN GLOBAL INITIATIVE

**Push the Boundaries of AI Driving AI
Breakthroughs to Shape the Cities We Live In**



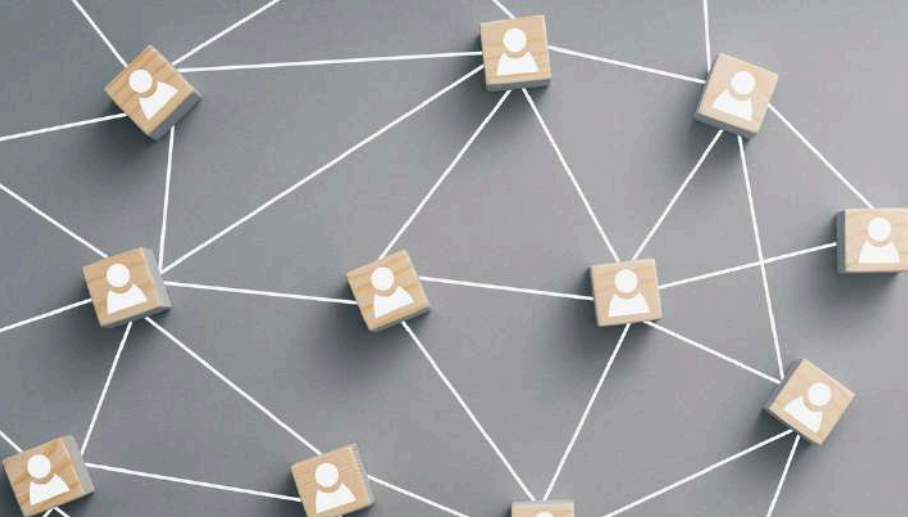
Zhang Fan is a trailblazing venture capitalist and angel investor who has shaped the global technology landscape since the 1990s. As a visionary leader, he has built and backed some of the most transformative companies of our time. He co-founded Sequoia Capital China, where he played a pivotal role as a Managing Partner, fuelling the growth of groundbreaking startups and industry disruptors. Widely respected for his strategic insights and business acumen, he was previously awarded by Forbes among its “Midas List – Top Venture Capitalists in China” for four consecutive years.



ZHANG FAN
Global AI Initiative

Zhang Fan Global AI Initiative Award

The Zhang Fan Global AI Initiative Award S\$125,000 Cash Prize empowers startups driving transformative global impact by harnessing artificial intelligence to tackle urgent sustainability challenges. Three teams will be awarded S\$50,000, S\$40,000, and S\$35,000 respectively.



Amplifying Innovation,
Elevating Impact at LKYGBPC

APRW

Founded in 1996, APRW is one of Singapore's most established independent integrated communications agencies. With nearly three decades of experience, the agency has built a strong track record in delivering impactful, creative, and tailored solutions for clients across diverse industries, including government, finance, technology, consumer, lifestyle, and non-profit sectors. Uniquely led by a team of owner-directors who bring business acumen along with hands-on leadership, long-term commitment, agility & independence and trusted partnerships. The firm opened its first overseas office in Indonesia in 2020, supported by Enterprise Singapore.

Through the APRW PR Resource Prize, the agency empowers innovators with strategic storytelling and brand positioning to amplify their impact globally.

"As one of Singapore's leading independent communications agencies, APRW delivers strategic PR, digital, and brand-building expertise. Through the APRW Public Relations Resource Prize, we equip LKYGBPC winners with world-class storytelling, visibility, and reputation support to accelerate impact across Asia and beyond."

– Anu Gupta, Director, APRW



APRW Public Relations Resource Prize by APRW

In today's fast-paced innovation landscape, a powerful narrative can be the key to market leadership. The APRW PR Resource Prize, part of the 12th LKYGBPC, is designed to equip startups with strategic storytelling, brand positioning, and media engagement expertise to accelerate their growth and global visibility.

WHO IS IT FOR:

Startups and university spin-offs seeking to refine their messaging, enhance brand credibility, and attract investors, media, and customers.

Innovators in emerging tech, sustainability, public health, and urban solutions who need expert guidance in strategic communications.

Founders looking to scale beyond borders with a strong digital presence and global PR strategy.

MEET THE CORPORATES

A TITAN EXCHANGE



Event Details:

- Date:** Wednesday, 1st October 2025
- Time:** 8.30am - 11.15am (followed by networking lunch)
- Venue:** SMU Hall, Basement 1, Yong Pung How School of Law, 55 Armenian St, S179943

An event designed for purposeful conversations that fast-track pilots, unlock test-bedding opportunities, and spark corporate-startup partnerships. This brings together the entire innovation ecosystem - government agencies, regulators, policy shapers, industry leaders - with 60 frontier-tech startups ready to scale.

8:30 AM	Welcome Breakfast & Registration
9:00 AM	Fireside Chat: Winning Predictably in Southeast Asia, Featuring EnterpriseSG, ACE, SGInnovate and Ilya Trakhtenberg , Author of Predictable Winners
9.30AM	Curated N-1 and 1-1 business matching with Top 60 finalists
10.45AM	Open mic with Top 60 finalists
11:15 AM	Networking Luncheon

Exclusive to LKYGBPC Finalists

From 1pm onwards, the finalists embark on curated site visits to Singapore's premier R&D facilities and innovation hubs to explore additional collaboration opportunities. These exclusive locations showcase Singapore's cutting-edge research capabilities and provide finalists with deeper insights into potential partnerships beyond the morning sessions.



To make Singapore a great city to live, work and play

Location (1) → Urban Redevelopment Authority (URA) City Gallery

Why this matters for founders

Cities don't evolve by accident. In land-scarce Singapore, it's in our DNA to plan meticulously, design with intent, and continually reshape the city as needs and priorities shift. The URA City Gallery gives you a rare window into this process — how urban planning balances limited space with economic growth, liveability, and sustainability. For founders, it's not just a gallery; it's a blueprint showing how policy becomes infrastructure, and where innovative solutions can make a real impact.

What you'll experience

Step inside the URA City Gallery and see the city come alive through an immersive 3D model of Singapore's evolving skyline, explore interactive zones on housing, transport, heritage, and sustainability, and experience the future of planning through long-term strategies shaping resilience. For founders, it's a chance to view the city through a startup lens — spotting opportunities where tech, data, and design can drive smarter mobility, greener buildings, and more liveable precincts.

Who should join

Startups in urban solutions, smart mobility, real estate tech, green buildings, AI/IoT for cities, climate adaptation, and data platforms — anyone building solutions for fast-growing, resource-constrained cities.



MEET THE CORPORATES

A TITAN EXCHANGE

20 12th LEE KUAN YEW GLOBAL BUSINESS PLAN COMPETITION | EVENT PROGRAMME



Location (2) → Sustainable Gallery @ Marina Barrage

Why this matters for founders

A tactical look at how Singapore built a resilient city, operationalizing water security, flood control and public space in one integrated system. Now envision where your solution can plug in a similar set up.

What you'll experience

In under 90 minutes, the Sustainable Gallery distils powerful insights across climate, water, circularity and smart-city infrastructure. Discover how Marina Barrage, Singapore's 15th reservoir anchors the nation's water security, flood resilience and urban liveability in a single visionary asset infrastructure asset.

Who should join

Startups in urban solutions, climate/water tech, energy & storage, circularity, sensors/IoT, AI for infrastructure, built-environment, ESG & reporting — any team building for cities, utilities or large asset owners.



Location (3) → Health Innovation @ National Healthcare Group (NHG) x Co11ab

Why this matters for founders

Healthcare is one of Singapore's largest and most innovation-hungry sectors. This session offers a rare inside look at how the NHG is shaping its Research, Innovation & Enterprise (RIE) agenda, and how startups can align solutions to the system's biggest priorities. See how new models of care, digital health tools and healthtech pilots are being scoped, tested and scaled across an integrated health network.

What you'll experience

Understand the strategic thrusts guiding Singapore's health innovation agenda. See real examples of research and innovation projects that have translated into better care delivery and operational impact. At Co11ab (NHG's dedicated healthcare innovation space.) Explore how Co11ab convenes clinicians, researchers, and startups to co-develop and test new ideas in real-world healthcare settings. Engage directly with NHG leaders, clinicians, and innovation managers — identify collaboration pathways and next steps.

Who should join

Startups in healthtech, digital health, medtech, AI for healthcare, patient engagement, diagnostics, data platforms, workforce enablement, or wellness solutions — any team seeking to build, test, and scale innovations with a healthcare system partner.



MEET THE CORPORATES

A TITAN EXCHANGE



Location (4) → A*STAR ISCE² (“Easy Square”)

Why this matters for founders

Set on Jurong Island — Singapore’s energy and chemicals hub that houses some of the world’s largest petroleum, specialty chemicals, and pharmaceutical players — the A*STAR Institute of Sustainability for Chemicals, Energy and Environment is positioned at the frontline of industry transformation.

What you’ll experience

ISCE² six divisions, from Carbon Conversion & Future Energy Carriers to Digital Chemistry, cover the full spectrum of industrial sustainability. By working hand-in-hand with industry, academia, and public agencies, ISCE² accelerates pilots and translates R&D into real-world impact. For startups, it offers a chance to collaborate, access testbeds, and align solutions with national priorities such as the Green Plan 2030 and the Zero Waste Masterplan.

Who should join

Startups in climate tech, sustainable materials, carbon capture & utilisation, green chemistry, industrial AI/digital twins, safety engineering, and biotech for chemicals — anyone building for the future of energy, materials, or circular manufacturing.





Build Your Legacy. Legal Expertise for Enduring Innovation



Lee & Lee is one of Singapore's leading law firms. The firm provides a comprehensive range of legal services to serve the differing needs of corporates, financial institutions and individuals.

Lee & Lee's philosophy is to serve its clients' needs with an approach that is traditional yet innovative, conservative yet forward-looking, and which is in step with the trends of the future while relying on the experiences of the past.

Lee & Lee has more than 90 lawyers and has the following 5 departments:-

- Banking
- Corporate
- Intellectual Property
- Litigation and Dispute Resolution
- Real Estate & Property
- Environmental, Social, and Governance Practice

Lee & Lee Legal Resource Prize

The Lee & Lee Legal Resource Prize is designed to support startups navigating the complex legal landscape of entrepreneurship. This prize empowers founders by providing legal guidance, resources, and strategic counsel to help them scale their businesses while ensuring compliance with regulatory frameworks.





SINO GROUP
信和集團

Sino Group

Sino Group is one of Hong Kong's leading real estate developers, with businesses spanning property development and investment across Hong Kong, Mainland China, Singapore and Australia. Its hospitality arm includes The Fullerton Hotels and Resorts, which operates landmark properties in Singapore, Hong Kong and Sydney. The Group actively supports innovation and sustainability through platforms such as Sino Inno Lab and the PropXTech programme (with Hong Kong Land), and through philanthropic initiatives led by the Ng family.

Key Initiatives

Sino Inno Lab: Serves as a real-asset sandbox where startups can pilot proptech solutions across hotels, residences, malls, and property management operations.

PropXTech: Joint programme with Hongkong Land that sources, tests, and commercialises game-changing proptech with live pilots across mixed-use assets, with the aim of bringing game-changing proptech solutions to market.

Innovation & community impact: Backing innovation/technology development and education via the Ng Teng Fong Charitable Foundation and Hong Kong Innovation Foundation. Programmes span STEM learning, maker initiatives, scholarships and showcases, building a talent pipeline while advancing social innovation and sustainability literacy.

**SUPPORTERS
& PARTNERS**

12th LKYGBPC Opening Reception Dinner

Powered by



SINO GROUP
信和集團

6.30pm	Arrival of Guests
7.00pm	Emcee introduction
7.05pm	Day 0 to 1 Recap Video
7.10pm	Honours Roll - Finalists Introductions
7.20pm	Opening Remarks by Ms. Shirley Wong, Chair of LKYGBPC
7.25pm	Dinner & Networking Commences / Vetta Quartet
8.00pm	Spotlight on Urban Sustalnnovator
8.10pm	Vetta Quartet
8.10pm	Closing Remarks, Acknowledgements
9.00pm	Emcee Closing and announcements



Clifford Pier Where History meets the Future

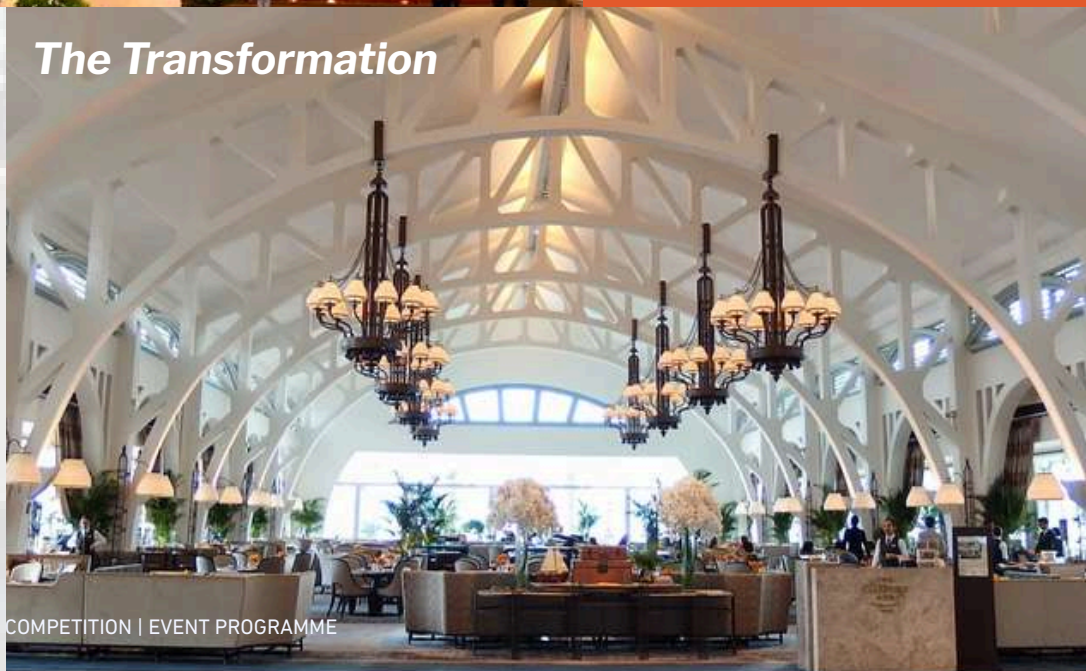
Built in 1933 and affectionately known as the “Red-Lantern Pier” (红灯码头), it once welcomed generations of immigrants and traders to Singapore. Boats would anchor offshore, and passengers — many with hope and uncertainty in equal measure — would be ferried ashore in small bumboats to begin their journeys in a young city of opportunity.

As the stage for the Opening Reception of the 12th Lee Kuan Yew Global Business Plan Competition, it hosts a new tide of arrivals: 60 of the world’s most promising university-affiliated deep-tech ventures, together with mentors, ambassadors, students and changemakers from around the globe. With this pier as our launchpad, LKYGBPC renews its mission to forge enduring partnerships across science, business, and society —rooted in Singapore’s legacy of openness, resilience, and ambition.



Vetta Quartet Performances

The Transformation



THE GEAR by Kajima

Building for the Next 100 Years
Where Startup Innovation
Fuels a Legacy



THE GEAR KAJIMA

The GEAR by Kajima is the technology services business and the open-innovation platform of the Kajima group. As part of Kajima, one of Japan's largest and most established construction, engineering, and real estate companies with a nearly two-century legacy of innovation, The GEAR by Kajima bridges world class engineering expertise, licensed technologies, and global collaboration to innovate transformative solutions for the built environment. Read more about The GEAR by Kajima [here](#).

The GEAR by Kajima Built Environment Accelerated Commercialisation Prize worth \$60,000 will be awarded to startups with solutions that enhance sustainability, productivity, occupant wellbeing, or infrastructure resilience, and are ready to collaborate with Kajima on real-world deployments. The winner will receive up to S\$30,000 in non-dilutive POC funding with Kajima, one year of premium office space at The GEAR Building, and tailored coaching to build solutions that change how people live, work and play.



FACULTY ENGAGEMENT

Faculty members from Singapore Management University have expressed even stronger interest in engaging with this year's Lee Kuan Yew Global Business Plan Competition (LKYGBPC) finalist start-ups. Their diverse areas of collaboration and engagement—ranging from mentoring and consulting, to classroom sharing, research partnerships, and co-developing case materials—highlight the growing synergies between academia and entrepreneurship.

This year, SMU faculty see the competition not just as a platform to showcase the world's most innovative start-ups, but also as an opportunity to build meaningful bridges between research, teaching, and practice. Their interests include:

- **Mentorship and Advisory Roles** – Several faculty members are eager to serve as mentors, advisors, or consultants to finalist start-ups, sharing domain expertise and guidance to help accelerate venture growth.
- **Classroom Integration** – Faculty plan to feature the entrepreneurial journeys of founders in teaching, either through classroom sharing sessions, case interviews, or video resources for student learning.
- **Research Collaborations** – Start-ups exploring cutting-edge technologies present opportunities for joint research projects, academic publications, and co-authored case studies.
- **Direct Engagement with Founders** – Many faculty want to meet finalist founders in person, fostering deeper dialogue and potential partnerships beyond the competition.
- **Practical Application** – Select faculty are also interested in leveraging start-up solutions to enrich their research, particularly in data collection and applied learning contexts.

By connecting SMU faculty expertise with the creativity and drive of global entrepreneurs, the LKYGBPC continues to be a catalyst for innovation, collaboration, and impactful knowledge creation.

As clean, high-quality data is increasingly recognized as the new oil for driving economic and societal progress, SMU faculty are pioneering an initiative to make the rich historical data generated by the Lee Kuan Yew Global Business Plan Competition available in a secure sandbox for the SMU community—with plans to extend access to a broader audience in the future. This effort will fuel breakthrough research into the correlations between investment decisions, founder traits, and other factors, enabling the development of trusted AI models and analytics tools that empower the innovation and entrepreneurship ecosystem—including investors—to make smarter, evidence-driven decisions and advance impactful ventures.

List of our faculty who are interested in engaging with finalist start-ups:



PROF TAMAS MAKANY
Director, CTE, The Centre for Teaching Excellence



DR HAVOVI JOSHI
Director The Centre for Case Learning Excellence (CCX)



PROF YUANTO KUSNADI
Assoc Prof of Accounting (Education); Academic Director (SMU-X)



PROF JACK JIAO
Professor of Urban Informatics; Urban Fellow (Urban Systems)



PROF PAUL ROBERT GRIFFIN
Associate Professor of Information Systems (Practice)



PROF DEBIN GAO
Professor of Computer Science; Co-Director, Centre on Security



PROF YIN WANG
Assistant Professor of Accounting; Co-Director, Master of Science in Accounting (Data & Analytics)



PROF THEODOR COJOIANU
Associate Professor of Sustainable Finance Urban Fellow (Urban Growth)

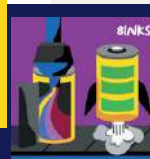


PROF CLAYTON MILLER
Associate Professor of Urban Informatics; Urban Fellow (Urban Systems)



PROF PATRICK TAN SIONG KUAN
Senior Lecturer of Strategy & Entrepreneurship

Popular start-ups picked by faculty to engage with



A Shared Purpose That Powers Greater Possibilities: LKYGBPC and raiSEs

The Singapore Centre for Social Enterprise, raiSE was set up to raise awareness on social entrepreneurship and raise support for social enterprises in Singapore. raiSE hopes to strengthen the social enterprise sector in Singapore and encourage the growth of social enterprises as a sustainable way to address social needs. raiSE provides a range of support to help social enterprises from start to mature stages, such as funding, advisory services, training, relevant resources and networks. In facilitating the growth of the sector, raiSE works closely with the public and private sectors, and continues to welcome the support of corporations and individuals who are keen to help advance social entrepreneurship in Singapore.



raiSE Social Impact Grant Prize

raiSE Social Impact Grant Prize will be awarded to outstanding social enterprises that harness technology to address critical social challenges in Singapore. Winning startup(s) may receive up to S\$300,000 in funding, along with tailored mentorship and support to help them refine, scale, and sustain their impact initiatives.



**SUPPORTERS
& PARTNERS**

CLASSROOM TAKEOVERS

Classroom Takeovers are more than a spotlight; they are a direct and dynamic bridge connecting the world's most promising innovators with Singapore's brightest minds. Immersing world-class startup founders in the classrooms, Classroom Takeovers are designed for founders to impart their expertise and innovation journeys directly to students and faculty.

This platform provides finalists with invaluable access to local talent, allowing them to scout for future team members and collaborators. In turn, students and faculty gain direct exposure to frontier technologies and entrepreneurial thinking, creating a rich, exchange of knowledge that catalyzes new ideas.



SMU FACULTY

SCHOOL OF ACCOUNTANCY



YUANTO KUSNADI

Associate Professor of Accounting (Education); Academic Director (SMU-X)

COR1307

Accounting for Entrepreneurs

ACCT009

Ovsea Proj Expc (Acctg in AS)



YIN WANG

Assistant Professor of Accounting; Co-Director, Master of Science in Accounting (Data & Analytics)

ACCT 101

Financial Accounting

ACCT 224

Financial Reporting and Analysis

ACCT642

Financial Statement Analysis

ACCT 101

Financial Accounting

ACCT 224

Financial Reporting and Analysis

ACCT642

Financial Statement Analysis

ACCT680

Accounting Analytics Capstone - Analysis Phase

ACCT681

Accounting Analytics Capstone - Evaluation Phase

LEE KONG CHIAN SCHOOL OF BUSINESS



GOMULYA, DAVID

Associate Professor of Strategy & Entrepreneurship; Academic Director, Master of Science in Entrepreneurship and Innovation

MGMT 6026

Entre. and Intrapreneurship



AHMADREZA MOSTAJABI

Assistant Professor of Strategy & Entrepreneurship

MGMT102

Strategy

SCHOOL OF COMPUTING AND INFORMATION SYSTEMS



WYNTER LAURA

Associate Professor of Computer Science (Practice)

IS469, CS614

Gen AI with LLMs

Financial Reporting and Analysis

ACCT642

Financial Statement Analysis

ACCT680

Accounting Analytics Capstone - Analysis Phase

ACCT681

Accounting Analytics Capstone - Evaluation Phase

SCHOOL OF ECONOMICS



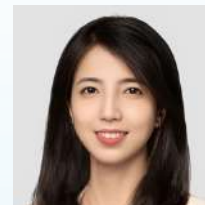
MADHAV SHRIHARI ANEY

Associate Professor of Economics (Education)

ECON118

Economic Development in Asia

LEE KONG CHIAN SCHOOL OF BUSINESS



NG XU WEN

Adjunct Lecturer

COR-MGMT1303

Entre. & Bus. Creat'n

CLASSROOM TAKEOVERS (11th LKYGBPC)

Dr. Yan (CTO, Cytoniche) came to talk to my MAF Corporate Finance class for about 45 mins. The students loved it. Around 50 persons were present.

DAVID DING

Associate Professor of Finance (Education); Director, CFA University Affiliation Program@SMU



Meeting Mr Heng Swee Keat, Chairman of the National Research Foundation

Custodian of Singapore's Research, Innovation & Enterprise (RIE) Ecosystem, the National Research Foundation (NRF) is a department within the Prime Minister's Office that sets the national direction for R&D, funds strategic initiatives and nurtures research talent. NRF is chaired by Mr Heng Swee Keat. He is also Director of the GIC Board and a member of the GIC Investment Strategies Committee. He served as Singapore's Deputy Prime Minister from 2019 to 2025.

Mr Heng will be meeting the LKYGBPC finalist founders at the Canvas of the Future Arts Exhibition on 2nd Oct.



Guest-of-Honour:

MR. HENG SWEE KEAT

Chairman of National Research Foundation



From Singapore, with heart.

We're the Singapore Global Network — a growing, global community of curious, creative, and open-hearted people like you. Whether you've visited Singapore, worked with someone from there, or just really love kaya toast, you're welcome here.

Join us if you:

- ✖ Want to meet inspiring folks across industries and cultures
- ✖ Are curious about Singapore and Southeast Asia
- ✖ Believe in the power of connection —
for work, for friendship, for fun

**Scan the code to explore our world,
and maybe become a part of it.**



Build connections that matter | singaporeglobalnetwork.gov.sg

BLAZE MIXER NIGHT

DATE & VENUE

 **2 Oct 2025** | Time: 6.30pm - 11.00pm

 **Glass Dome - Landmark of Good**

BLAZE MIXER NIGHT IS POWERED BY



Brief History of Far East Square and China Square



Early Settlement:

Cantonese and Hakka immigrants settled in this area, building the Fu Tak Chi Temple to express gratitude for their safe journey from China.



Architectural Heritage:

Far East Square is characterized by its blend of traditional and modern architecture, featuring shophouses in various styles that emerged between the 1840s and 1960s

Cultural Significance:

The area is approached through five gates, each named after one of the five elements of the Chinese universe (metal, wood, water, fire, and earth), reflecting its deep cultural roots.



The Fu Tak Chi Temple,

Singapore's oldest temple, was restored in 1969 and later converted into the Fuk Tak Chi Museum in 1989. This museum now preserves and showcases historical artifacts from the immigrant era.



Party Venue: Glass Dome - Landmark of Good

28 China St, Glass Dome, Far East Square, Singapore 049570



BLAZE MIXER NIGHT

POWERED BY



Date:
2 Oct 2025

Time:
Doors open
from 7pm

HIGHLIGHTS:

- **12th LKYGBPC Grand Finalists to be revealed!**
- **Party to DJ Reiko**

TIME	PROGRAM SEGMENT
6.30pm	Arrival of guests
7.00pm	Doors open
7.05pm	Opening performance
7.10pm	Emcee opening
7.15pm	Playback of same-day edit of highlights video of the week
8.00pm	DJ Set 1 (Networking Dinner commences)
8.30pm	Awards Presentation
9.00am	Closing Remarks by LKYGBPC Chair
9.05pm	Closing by Emcee
9.10pm 11.00pm	DJ Set 2 End of Mixer Night



**DJ
REIKO**

DJ Reiko is one of Singapore's top DJane and model. With the ability to play a variety of genres, from her favourite Top40s, EDM, RnB & HipHop, to chill out House music, her versatility has garnered the respect of her peers, as well as becoming one of the most sought-after DJanes in Asia. DJ Reiko is ranked #3 Top DJane Singapore, #35 SEA Top50 DJanes, #69 Top100 DJane Asia, as well as EDMdroid Top10 Sexiest DJ.

DJ Reiko has become a household name for female DJs in the South East Asian party scene, playing for large-scale festivals, such as Beerfest Asia Singapore, NYE Countdown Singapore, It's the Ship Festival, and EWM Festival in China, sharing stages with the likes of Afrojack, Krewella, DJ Soda and many more, on top of her residency at Singapore's top club, FashionTV Club.

[Watch video here](#)

**DJ
REIKO**

STARTUP RESOURCES

Explore Entrepreneurship

BUSINESS INNOVATIONS GENERATOR

Business Innovations Generator

At BIG, we look for awesome founders, not just awesome ideas at the onset. Join BIG's coaching heavy and founder-centric programmes that are tailored to various stages and needs of entrepreneurs. Selected teams receive support including grant opportunities, world-class mentors and advisors, masterclasses, perks as well as a workspace in the heart of downtown Singapore. Find out more information [here](#).



Infocomm Media Development Authority

The IMDA Accreditation and Spark programmes aim to accelerate the growth of disruptive, fast-growing Singapore-based enterprise tech product companies by establishing their credentials and positioning them as qualified contenders to government and large enterprise buyers. For clarifications or to find out more details on the programme, please contact accreditation@imda.gov.sg.



Enterprise Singapore is the government agency championing enterprise development. Established in 2017, Startup SG is an initiative of Enterprise Singapore that provides comprehensive support for startup development in Singapore. It represents the shared interests of the startup community and unifies efforts to support the ecosystem under its various initiatives and programmes. With Startup SG, startups and ecosystem partners can more easily discover and access available avenues of support. Read more about Startup SG [here](#).



A*STAR (Agency for Science, Technology and Research)

The Agency for Science, Technology and Research (A*STAR) is Singapore's lead public-sector R&D agency. Through open innovation, it bridges academia and industry to advance scientific discovery and develop technologies that drive economic growth and improve lives across healthcare, urban living, and sustainability. Its research spans biomedical and physical/engineering sciences, while enterprise programmes such as T-Up and Tech Access give companies access to talent, equipment, and expertise to accelerate technology adoption. Read more [here](#).

Startup Resources

A*START Central & Incubator Support

A*START Central offers co-working desks, wet/dry labs, and shared prototyping facilities for deep-tech startups. Rolling intakes and subsidised bench fees let pre-seed/seed teams validate science, build MVPs, and run early pilots while tapping domain mentors, business clinics, and investor days. Typical results include faster MVP development, clearer regulatory pathways, and warm introductions to pilot partners or funders.

Tech Access & Expert Facilities

Through A*STAR's Tech Access, startups can book high-end equipment—additive manufacturing, metrology, bioprocess, model factories—on a pay-per-use basis with applications engineers on hand. Subsidised rates and standard NDAs let teams run one-off tests, low-volume prototypes, or pilot runs without heavy capex. The outcome is production-grade data, refined processes, and quicker iterations toward manufacturability.

T-Up Secondees, IP & Commercialisation

T-Up embeds A*STAR researchers or engineers into startups for 6–24 months, while structured licensing pathways give access to A*STAR's patent portfolio and co-development options. Costs are partly supported, and milestones, IP terms, and deliverables are set up front. Startups gain specialised R&D horsepower, stronger IP positions, and quicker progress to pilots, certifications, and Series A readiness.

SUPPORTERS & PARTNERS

Our vibrant community of partners is the bedrock of our success. They echo our unwavering belief in the need to support and empower next-gen innovators from around the world and they fuel our mission. From generous funding and invaluable time commitments to the sharing of crucial knowledge and networks, their support enables us to think big and go far. We extend our deepest gratitude to our incredible partners.

FOUNDING BENEFACTOR



VISIONARY PARTNERS

INNOVATION PARTNERS



INVESTMENT PARTNERS



ENTERPRISE PARTNERS



KNOWLEDGE PARTNERS



GRANT PARTNERS



PARTNER COMPETITIONS



SUPPORTERS & PARTNERS

Our vibrant community of partners is the bedrock of our success. They echo our unwavering belief in the need to support and empower next-gen innovators from around the world and they fuel our mission. From generous funding and invaluable time commitments to the sharing of crucial knowledge and networks, their support enables us to think big and go far. We extend our deepest gratitude to our incredible partners.

Silver Partner:

ASEAN



EUROPE



NORTH AMERICA



SUPPORTERS & PARTNERS

Our vibrant community of partners is the bedrock of our success. They echo our unwavering belief in the need to support and empower next-gen innovators from around the world and they fuel our mission. From generous funding and invaluable time commitments to the sharing of crucial knowledge and networks, their support enables us to think big and go far. We extend our deepest gratitude to our incredible partners.

Silver Partner:

GREATER CHINA



REST OF THE WORLD



HOW SMU SUPPORTS LKYGBPC

Jay & Marilyn Ng Greenhouse

Open to All LKYGBPC Visitors

To support your LKYGBPC journey, Level 4 offers reserved hot-desking for guests and finalists. Drop in to recharge, take meetings, or meet our founders between events!



Located in the heart of the city, the award-winning Jay & Marilyn Ng Greenhouse is a 6,000 sq ft innovation hub designed to support founders and changemakers building the next generation of ventures. Equipped with enterprise-grade 10 Gbps connectivity, the Greenhouse ranks among Singapore's fastest co-working spaces in the city.

Purpose-built to foster collaboration, the Greenhouse brings together students, faculty, alumni, investors, and partners to transform bold ideas into meaningful impact.

- **Work** — Hot-desking zones, meeting rooms, and quiet focus areas across Levels 3 and 4
- **Connect** — Curated mixers, Tech Colliders, and networking with VCs, corporates and policymakers
- **Learn** — Peer- and expert-led sessions with SMU faculty and ecosystem partners



HOW SMU SUPPORTS LKYGBPC



At the heart of Singapore's dynamic educational landscape stands Singapore Management University (SMU), renowned for its commitment to nurturing innovative thought leaders and changemakers. With a rich history of fostering entrepreneurship, SMU has consistently embraced forward-looking initiatives.

A prime example is the establishment of the SMU Institute of Innovation and Entrepreneurship (IIE) in 2009. IIE serves as the epicenter of entrepreneurial excellence within SMU, driving a culture of innovation, fostering startup growth, and empowering the next generation of entrepreneurs. It is an embodiment of SMU's unwavering dedication to shaping the future of business and innovation through education and entrepreneurship. SMU's commitment to fostering entrepreneurship and innovation extends through its unwavering support of the Lee Kuan Yew Global Business Plan Competition (LKYGBPC), organised by IIE. This prestigious global university startup competition serves as a testament to SMU's dedication to providing a platform for aspiring entrepreneurs and innovators worldwide.

SMU's collaboration with IIE in hosting the LKYGBPC highlights its vision to not only educate but also empower the global community of student-led startups to participate, innovate, and drive positive change on a global scale.



12TH LEE KUAN YEW

GLOBAL BUSINESS PLAN COMPETITION



Institute of
Innovation &
Entrepreneurship

CELEBRATING
MEANINGFUL
IMPACT



Institute of Innovation & Entrepreneurship
Singapore Management University

Level 5, SMU Connexion
40 Stamford Road, Singapore 178908

<https://iie.smu.edu.sg>